

SONOMA VALLEY HOSPITAL COMMUNITY REPORT

ACUTE CARE
STAFF WELLNESS
PATIENT HEALING
HEALTHY COMMUNITY

FOUR LEVELS
of HEALING

SONOMA VALLEY HOSPITAL

INSPIRING SPIRIT

EMOTIONAL SUPPORT

MENTAL RELAXATION

PHYSICAL HEALING



Sonoma Valley Health Care District

BOARD OF DIRECTORS 2015



Bill Boerum
Secretary



Jane Hirsch
1st Vice Chair



Peter Hohorst
Treasurer



Sharon Nevins
Chair



Joshua Rymer
2nd Vice Chair



Sonoma Valley Hospital was founded in 1946 as a non-profit district hospital. It is governed under the Bylaws of the Sonoma Valley Health Care District with oversight by a publicly-elected Board of Directors. Directors serve four-year terms, with elections taking place during general elections for local, state or national offices.

The Mission of the Sonoma Valley Health Care District is to maintain, improve and restore the health of everyone in our District, which encompasses the entire Sonoma Valley with the exclusion of Kenwood.

As part of the Sonoma Valley Health Care District, the Hospital is supported primarily by revenues from services, augmented by taxpayer support in the form of a parcel tax, charitable bequests and donations. The Sonoma Valley Hospital Foundation plays an integral role in Hospital fundraising efforts.

Letter From The Board Chair

Many People Deserve Our Gratitude

As the board chair for the past two years, I've had the opportunity to experience first-hand the incredible commitment of the many people connected to our Hospital. I am filled with gratitude for all that they do to support the residents of our Hospital District and would like to recognize them.

There are a number of groups to acknowledge, each made up of amazing individuals committed to the care that every person receives when they are in need of health services at the Hospital. All contribute to enhancing our mission and improving the lives of our residents.

Physicians – For supporting the Hospital both through their work on Hospital committees, and in providing excellent care to District residents.

Hospital Staff – The teamwork, dedication and personal service of those providing patient care, along with those providing support services, is extraordinary. Their efforts greatly contribute to the recognition the Hospital receives for its high level of care.

Administration – Their vision, leadership and commitment to anticipate changes in the health care field keep the Hospital running smoothly, as well as their skill in achieving complicated and sophisticated improvements.

Volunteers – As with every organization in Sonoma, this group provides valued support for many of the ongoing needs of the Hospital, from the Foundation to the front desk greeters, to the committee members on the District Board and administration committees, and many more.

Donors – For recognizing the returns to the community by funding the capital costs of the Hospital that renew and expand our resources and services.

Directors of the Sonoma Valley Health Care District Board – All are deeply committed to our Hospital, bringing their considerable experience, expertise and insight to address the issues of strategy, quality and financial viability.

My deepest thanks for all you do.

I also want to acknowledge our community for its strong support of the Hospital. The investment the people of our community have made in extensively upgrading and expanding the Hospital is paying off. I feel we have much to be thankful for this year and I hope you share my belief that our Hospital, thanks to the efforts of so many, is more than up to handling the important role it plays in our District.

Sharon Nevins, Chair of the SVHCD Board of Directors



Sharon Nevins

Letter From The CEO

Staying Ahead of the Curve

It's been more than five years since I was given the opportunity to serve as the leader of Sonoma Valley Hospital and time has truly flown by. The challenges that were present then, and the significant changes in health care since, have made the journey very exciting.

I have been in health care for 25 years now and, as many know, this is the third hospital for which I've served as CEO. I have never seen as much industry change as we've experienced in the past year. While we continue to manage through the changes, it's clear that the next five years will be just as challenging for all small hospitals.

Many of the challenges we face are unique to small hospitals. By definition, small hospitals serve a market of less than 50,000 – like our District's 42,000 – and this means a smaller patient base requiring a focus on operating efficiency for the hospital to be financially viable. I'm pleased to say we have made considerable progress in managing costs and controlling margins.

Another important feature of small hospitals is emergency services. Like SVH, the rationale for most small hospitals begins with the community's desire to have an Emergency Department. It's clearly a 24/7 proposition and entails having an Intensive Care Unit, Surgery, Laboratory, Radiology, Respiratory Therapy, along with the support services they require. It also means having many physicians in various specialties on-site or on-call.

The great news is that we have a solid foundation in place with our new Emergency Department and completion of many of the necessary Hospital upgrades. And for this we say, Thank You, Sonoma!

We have spent the past year ensuring that we can sustain our Hospital with less reimbursement, which is the reality in health care today. All services we offer outside of Emergency need to generate a margin that contributes to our Hospital's sustainability. As you will



"We aim to become a model for the small community hospitals of the future."

see in this report, we are proud to say our Inpatient Care, Home Health, Skilled Nursing Facility, Obstetrics, Outpatient Rehabilitation, Wound Care, Occupational Health and Wellness services such as Nutrition Counseling, are contributors to our Hospital's viability, have great loyalty and are recognized for excellence.

So what's next? Sonoma Valley Hospital is ahead of the curve because it is now a "Healing Hospital." That means we offer not only traditional Emergency and Acute Care, we also are a Healthy Organization, one promoting physical, mental, emotional and spiritual healing as we lead the Sonoma Valley in becoming a healthy community.

With many innovative partnerships and programs, we aim to stay ahead of the curve and become a model for the small community hospitals of the future.

Kelly Mather, President and CEO



SONOMA VALLEY HOSPITAL 2015 HIGHLIGHTS

SVH saw progress in a number of important areas during the past fiscal year due to the hard work of our leadership team, staff, board and stakeholders. In every major area, the Hospital ended the year in a stronger position than it has experienced in many years.

Following are highlights of the year.

Quality Results Growing Recognition For Our High Levels Of Quality And Safety

SVH's continued emphasis on quality of care, patient satisfaction and patient safety remained a focus in the past year, and we're proud to report that SVH placed among the top 25 percent of hospitals nationally in a number of areas.

Our high level of maternity care placed us among the top 33 hospitals in the State for Obstetrics services, according to CHART, a State health care group.

California Healthcare Compare ranked us as the top hospital in the North Bay for hip and knee replacement surgery.

This year, we also were ranked among the top 10 percent of hospitals nationally for staff satisfaction, which is a key contributor to overall quality of care.

Our quality performance continues to be recognized by the Centers for Medicare & Medicaid Services (CMS) which awarded us a Value Based Purchasing score (VBP) placing us among the top 20 percent of hospitals nationally for quality. This ranking is significant since it provides SVH with a higher rate of compensation from Medicare than most other hospitals in the country.

It's gratifying to learn that our efforts to improve service quality have become apparent to our community. A recent independent survey of District residents found that eight out of 10 people who have used SVH services in the past three years reported high levels of satisfaction with the care they received.

We were recognized by Consumer Reports in 2014 as one of the safest hospitals in the country and continue to focus on creating a safe environment for patients and staff through our "Culture of Safety" Program that continuously works to improve services and procedures.

More information about SVH's standards and how we compare with other hospitals can be found in the Quality section of our website at svh.com.

Physician Partnership Meeting Our Community's Medical Needs Here In Sonoma

Our Hospital could not succeed without the strong partnership we have with local physicians. We now have more than 40 physicians seeing patients in Sonoma and can meet most of our community's medical needs right here at home.

This year, we opened an office in downtown Sonoma to help attract more medical specialists to our community, which it has accomplished. The office now houses specialists in Orthopedics, Spine, and Bariatric, and brings new specialties such as Urology, Pain Management and Ear, Nose and Throat (ENT).

Our new Surgery Center is also proving to be an advantage for surgeons who are drawing patients from outside of the area.

For the services we are not able to offer because of the small size of our community, we've continued to expand our relationships with regional providers and insurers. Recently, we've worked with our long-term partner, Marin General Hospital, to expand cardiac care in Sonoma.

Our relationships with Western Health Advantage and SCAN Health Plan have increased community access to our services, notably with employers and seniors.



Providing A Broad Range Of Medical Services

Most of the medical services Sonoma Valley residents may require are available through physicians affiliated with the Hospital practicing here in our community. For more information on specialty practitioners, visit the "Find A Doctor" section on our website at svh.com.

Anesthesiology

Bariatric Weight Loss
Surgery

Cardiology

Emergency Medicine

ENT (Ear, Nose & Throat)

Family Practice

Gastroenterology

General Surgery

Hematology

Infectious Disease

Internal Medicine

Nephrology

Obstetrics & Gynecology

Occupational Medicine

Ophthalmology

Orthopedic Surgery

Pain Management

Pathology

Pediatrics

Plastic Surgery

Podiatry

Radiology

Spine Surgery

Urology

Vascular Surgery

Financial Report

Hospital Finances Show Improvement In Many Areas

SVH continues to make progress toward financial stability and is in a stronger financial position than it has been in years. We began the year with a focus on controlling expenses and made progress in a number of areas, although total expenses were higher than budgeted due to many regulatory requirements. Another goal this year was to reduce accounts payable and by fiscal year-end it was down to \$3 million, nearly half of what it was when the year began.

Several departments made significant operational and financial changes that helped the bottom line. These included Surgery, Home Health, Skilled Nursing and Laboratory. Also, thanks to the efforts of physicians and staff in increasing efficiencies, Obstetrics is now financially stable and saw a small increase in births this year.

The Hospital continues to struggle with the effect of a changing payer mix which places pressure on revenues, largely due to The Affordable Care Act. Medi-Cal now represents around 20 percent of our volume, up from seven percent less than two years ago, while our commercial payer mix has dropped from 24 to 20 percent. Medicare continues to represent half of our payer mix.

	2015	2014	2013
Operating Revenues	\$51,394,060	\$50,575,675	\$47,007,060
Operating Expenses	\$56,073,510	\$54,611,766	\$52,795,659
Operating Margin	\$ (4,679,450)	\$ (4,036,091)	\$ (5,788,599)
Total Non-Operating Revenues / Expenses	\$ 4,135,951	\$ 3,263,456	\$ 3,888,785
Capital Campaign/ Restricted Contributions	\$ 1,171,395	\$ 3,757,072	\$ 3,858,727
Increase in Net Assets	\$ 627,896	\$ 2,984,437	\$ 1,958,913

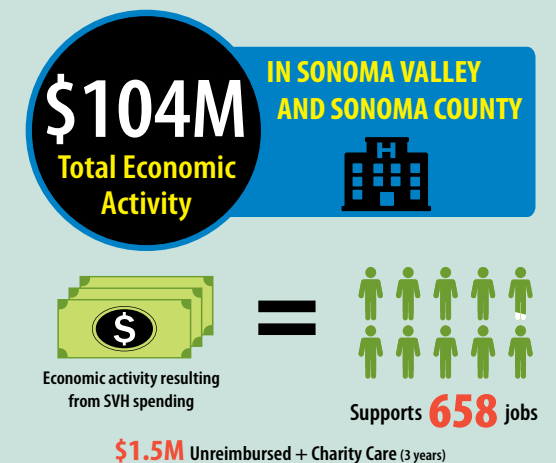
A positive development is the new cost accounting system we implemented this year which is much more sophisticated than that used by most other community hospitals. It provides greater insight into the component costs of patient care and improved accuracy in tracking revenue, helping us identify contribution margins for every service we offer.

An important measure of financial performance is Earnings Before Interest, Depreciation, and Amortization (EBIDA), which tracks cash flow. SVH this year achieved an EBIDA rate of 3.8%, or \$1.9 million, which is a good rate for a small hospital.

Hospital Contributes To Valley's Economic Health

Sonoma Valley Hospital is one of the largest organizations in the Sonoma Valley and according to an economic impact study reported this year, generates \$104 million annually in economic benefits for the region. SVH supports approximately 300 full time-equivalent jobs at the Hospital, and another 350 in the region. The Hospital also provided \$1.5 million in unreimbursed medical care to uninsured and under-insured members of the community.

Sonoma Valley Hospital ECONOMIC IMPACT



Community Health

Working Together To Create A Healthy Community

SVH is increasingly becoming a Hospital without walls. Serving our District no longer means just bringing patients into the Hospital when they have injury, illness or diagnostic needs. It also requires that we work to improve overall health through outreach in our community.

One important way we do this is through Population Health improvement initiatives, which are increasingly important for community hospitals because they are tied to new health care compensation models, notably the shift from fee-for-service to value-based models. Both commercial and government payers, and especially Medicare, increasingly decline to compensate hospitals for patient visits they consider avoidable, which places an emphasis on keeping healthy people healthy.

We have developed a robust Population Health program that touches many in our community by offering health education programs, clinics, workshops and screenings, along with patient coaching and counseling services.

We are fortunate to have outstanding local organizations to partner with on many programs including the Sonoma Valley Community Health Center, Vintage House, the Sonoma Valley Unified School District, La Luz Center, Parkpoint Health Clubs, Sonoma State University, Meritage IPA, Ceres, The Buck Institute, and many integrative health practitioners through our Integrative Health Network.

SVH's Dr. Robert Cohen addresses the audience at a Vintage House discussion about Advance Health Care Directives.



Binational Health Fair



Each year SVH Supports the Binational Health Fair by providing health screenings and vaccinations (above). Last summer, SVH supported the Sonoma Valley Back To School Health Fair with healthy snacks and health screenings (right and below).



Back To School Health Fair

SERVING THE HEALTH NEEDS OF THE SONOMA VALLEY

Sonoma Valley Hospital takes great pride in providing a warm, comfortable place of healing that places the needs of our community first. In doing so, we believe that we offer the best of all worlds. We have an upgraded facility with state-of-the-art technology, providing excellent quality of care with a level of personal attention you can find only in a community like Sonoma. Even though we are a small Hospital, we offer a wide range of services so that community members rarely need to travel far to receive the care they require. Here is an update on the many services we provide.

Emergency Services Providing A Safety Net For The Entire Valley

Sonoma Valley residents have embraced their state-of-the-art Emergency Department, which began its second year of operation in February. Emergency use has grown by 20 percent in the past year and now receives 10,000 visits annually.

Despite this growth, patients are usually seen quickly. This is due to our increased staffing, streamlined screening procedures and the expanded size of the ED, which allows staff to treat up to eight patients simultaneously, and do so in increased comfort and privacy. The high level of care provided by the Emergency staff, coupled with the calm, healing environment, explains why the Hospital's ED continues to receive high marks from patients.

"We understand how critical the emergency services we provide are to the Sonoma Valley and we work very hard to deliver the best care.

*The Emergency Department
handles 80 percent of all
emergency room visits in the
Sonoma Valley.*

It's been gratifying to see the overwhelmingly positive response to the new Emergency Department from the community," said Mark Kobe, RN, MPA, Chief Nursing Officer. "Hardly a week goes by that we don't hear positive comments from patients about the new facility and the attentive care they receive here."



Surgery

Patients And Surgeons Value New Surgery Center

"Surgeons really appreciate our modern new Surgery Center and it's helping us increase surgeries in several specialty areas, as well as attract new specialists to Sonoma. The feedback we've received from physicians has been extremely positive," said Allan Sendaydiego, RN, BSN, Director of Perioperative Services.

In the past year, the Surgery Center has averaged around 160 inpatient and outpatient admissions each month. Most of these are for local patients who find that, with the growing number of specialists now practicing in Sonoma, there's no need to go elsewhere for care.

In two areas, joint replacement and weight loss (bariatric) surgery, SVH is increasingly drawing patients from outside of the imme-



diated area and we expect to see surgeries in these areas grow in the coming year, Sendaydiego notes.

Recently, California Healthcare Compare, a service provided by Consumer Reports and the California Department of Insurance, identified Sonoma Valley Hospital as one of the top hospitals in the North Bay for hip and knee replacement surgery based on its patient experience, clinical quality outcomes, complications and readmissions rates.

*The new Surgery
Center averages
around 160 patient
admissions each
month*



Germ-Zapping Robot Enhances Patient Safety

SVH is the first hospital in the North Bay to acquire the Xenex Germ-Zapping Robot, thanks to a generous donor.

The state-of-the-art disinfection device enhances patient safety through an environmentally-friendly technology that uses pulsed xenon ultraviolet light (UV) to quickly destroy bacteria, viruses, mold and other pathogens in patient areas throughout the Hospital.



Acute Inpatient Care Achieving High Levels Of Patient Satisfaction

While inpatient admissions at SVH have declined in recent years, largely as a result of improved health care systems, technology and case management, the decline has stabilized. In the past year, SVH has averaged around 100 admissions each month.

Inpatient satisfaction has increased during this time. This is due in part to the attentive level of care provided, as well as to improvements in patient rooms. As part of our recent renovation, all 15 patient rooms on the medical-surgical floor were completely remodeled and converted to private rooms, providing patients with greater comfort and privacy.

With the new Surgery Center close by, surgical patients are now quickly moved to and from surgery. Patients feel secure because we continue to have both a Hospitalist and an Emergency doctor on duty in the Hospital around-the-clock each day.

Home Health Care Bringing Compassionate Skilled Care Into The Home

Each day, SVH health care professionals visit home-bound patients throughout Sonoma, as well as in parts of Marin and Napa counties. They are from Healing At Home, our Skilled Home Health Care Service, a nationally-recognized program that provides skilled, medically necessary and individualized care to homebound patients under physician orders.

In the past year, Healing At Home has continued to expand home services throughout the North Bay, including many patients who are referred by other hospitals and health care organizations. It now makes 1,000 home visits each month, and serves a large number of Medicare patients. Patients must have a physician's order to access services, which are provided by a professional staff that includes



registered nurses, licensed rehabilitation therapists, social workers, and certified home health aides.

"We really strive to live up to our name because it's also our mission," says Barbara Lee, RN, MSN, Program Director. "Most people prefer to recover at home from illness and injury, and we provide patients and their family with the support they need to manage their own recovery. Our team teaches them how to be safe and independent at home."



The Birthplace

A Safe, Comfortable Place For Mothers and Infants

The lovely tones of Brahms' Lullaby are regularly heard over the Hospital's intercom system, letting everyone know that a Sonoma family is welcoming a new member in The Birthplace. The Hospital has averaged nearly 14 births a month this year, a small but encouraging increase over the previous year.

SVH has been recognized as one of the top 33 "High Performing Hospitals" offering maternity services in California by CHART, a state health care group. Recently, California Healthcare Compare, a service of Consumer Reports and the California Department of Insurance, gave SVH high marks for childbirth services, which reflects patient experience, C-section, breastfeeding and episiotomy rates.



"We provide a safe, comfortable place here in the Hospital that expectant mothers truly appreciate," said Cynthia McAleer, RNC, Manager of The Birthplace.

The Birthplace is ranked among the top 33 hospital maternity services in California

"They value the personal attention they receive, and that we offer several private rooms where they can have the personal space to meet with family. They also feel secure because we have two highly trained, excellent OB nurses on duty at all times, with excellent obstetricians, pediatricians and anesthesiologists on call."



The Birthplace Offers New Class For New Moms

This year, The Birthplace expanded the informational classes it offers with the launch of the new **Mother and Baby Class**. It provides new mothers with an overview of care after birth and discusses such topics as breast and bottle feeding, relationship changes, newborn care, caring for yourself, and what to expect in the weeks and months after your baby comes home.

The Birthplace continues to offer its popular **Childbirth Preparation Class** intended for second and third trimester women and their partners. Topics include the stages of labor and delivery, strategies for coping with labor including breathing and relaxation, partner support techniques, and medication options.

For more information on either class, call 707.935.5084. Also, anyone wishing a private tour of The Birthplace to learn more about the facility and the services offered can schedule one by calling 707.935.5301.

Outpatient Diagnostics

State-Of-The-Art Diagnostic Technology

Outpatient Diagnostic Services are an integral part of the care we provide patients and SVH has made a number of improvements to services in the past year.



The Medical Imaging Department is committed to offering state-of-the-art digital imaging technology, including MRI and CT diagnostics. This year, SVH purchased several new diagnostic machines, including two new Ultrasounds, which use soundwaves in a safe and painless way to take pictures inside the body, and a new machine for vascular studies. It also ordered a new Fluoroscopy machine that allows monitoring of body functions.

We also offer a complete range of diagnostic imaging services for women including digital mammograms and bone density testing. The SVH Foundation is currently raising funds to purchase a state-of-the-art 3D mammography machine.

The Laboratory offers fast service from friendly technicians, and has expanded its hours to allow patients greater convenience in getting blood tests. It is now open Saturday mornings in addition to Monday through Friday hours. The waiting area for the Lab was redecorated this year to be more comfortable.

The Cardiopulmonary Department continues to provide a range of services including Complete Pulmonary Function Testing, Echocardiograms, Stress Echos, Bubble Study Echocardiograms, Nuclear Cardiac Stress



Testing, Arterial Blood Gas Testing, EKGs, Metered Dose Inhalation Instruction, dispensing of breathing treatment nebulizers, and Pulse Oximetry checks before and after exercise.

Celebrating 70 Years!

The Sonoma Valley Health Care District celebrates its 70th anniversary in 2016.

Look for news in upcoming months of special activities to be held both in the Hospital and the community.



Outpatient Rehab & PT

Helping Patients Get Out Of Pain And Back Into Action

The Hospital's Outpatient Rehabilitation and Physical Therapy Department, already one of the largest in the region, continued to expand its services and this year added two new licensed physical therapists.

Located in a spacious separate facility along Highway 12 near Maxwell Village, therapists provide a hands-on approach in conjunction with specific modalities, working closely with a patient's physician. The highly-trained staff includes two certified orthopedic specialists.

The department treats a wide range of conditions, ranging from common problems such as sprains and strains, headaches, and work-and sports-related injuries, to conditions such as acute and chronic pain, tendonitis, and spinal conditions. A specialty is helping patients recover after orthopedic surgery.



In recent years, the department has increased its emphasis on wellness to help community members stay active and healthy. It continues the Aches & Pains Clinics, in which community members are invited to learn more about the causes of common aches and pains and receive a personal screening, all without cost.

It also holds monthly **Balance Classes** to help seniors concerned about falling develop improved balance and confidence.



Special Procedures

Wound Care Service Addresses A Special Health Need

"One thing a small hospital can do really well is respond quickly to community health needs that are not being met by anyone else. A good example of this is wound care," said Kelly Mather, CEO. "Many hospitals have stepped away from this service in recent years, but we found there was a need here in the Sonoma Valley and we started a service that has received outstanding response."

Started just over two years ago, the Hospital's Wound Care service has grown by 40 percent in the past year and now also serves patients outside of the Sonoma Valley, which has necessitated adding staff to meet the increased demand.

The Wound Care Clinic is located within the Hospital and regularly treats patients with wounds resulting from diabetes, infection, trauma, surgery and other conditions that lead to difficult wound healing.

It offers an individualized approach, working closely with the patient's physician to provide outpatient treatment for acute and chronic wounds to heal them in the shortest time with minimal pain, discomfort and scarring.

Occupational Health Businesses Count on SVH To Help Their Employees

Employers throughout the Sonoma Valley and beyond have learned they can depend on SVH when it comes to the health of their employees. The Hospital's Occupational Health Department provides prompt access to medical treatment for employees with work-related injuries.

Occupational Health has become a regional center, serving hundreds of businesses located as far away as Santa Rosa, Napa and Vallejo. In the past year, the department has seen an increase in services, on the average seeing 100 people each week for treatment of injuries that can include everything from fractures and lacerations to strained backs and repetitive stress injuries.

To handle the growing demand, the department has added several staff members, including a Nurse Practitioner who is also a wellness coach.

Local businesses refer 100 employees each week to SVH's Occupational Health Program

"Employers value us because we offer a full complement of examinations and testing tailored to meet their needs," said Dawn Kuwahara, RN, BSN, Chief of Ancillary Services. "They also like that our staff is skilled at helping them negotiate the complex maze of worker's



compensation forms and approval processes." She notes that translation services are available for non-English-speaking patients.

Travel Medicine Services

The Occupational Health Department also offers Travel Medicine services for employers and the community. It is a convenient way to arrange the vaccinations and medications needed to travel abroad, and is a good resource for information on what is needed for each destination you plan to visit.



Cancer Support Sonoma Opens

This year, the Sonoma Valley Hospital Foundation, in partnership with the North Bay Cancer Alliance, opened Cancer Support Sonoma (CSS). This new program, located within the Hospital, offers a range of complementary

therapies to help ease the symptoms frequently associated with conventional cancer treatment. In its first few months, the program provided more than 250 treatments.



CSS has also announced it has received approval to undertake a two-year study on the program in partnership with North Bay Cancer Alliance to develop a highly effective model healing program that will help improve the quality of life for those undergoing cancer treatment.

CSS covers its costs through donations and grants, and utilizes a sliding scale fee for patients. Services are made as accessible as possible in order to serve all who need them, and no one is turned away because of inability to pay. For more information, call 707.935.5244, or go to svh.com/foundation/css.

Wellness

Improving Health Throughout Our Community

The Hospital's mission is to "restore, maintain and improve the health of everyone in our community." Because we take this responsibility very seriously, we have created a wellness program that promotes improved health and wellbeing both inside and outside of the Hospital.

"We want our Hospital to serve as a guide to the world of healing and wellness, both for staff and our community," said Steven Lewis, SVH Wellness Coordinator. "In the past several years, we've expanded this program and the Hospital is increasingly seen as a role model when it comes to wellness programs. Often, we're asked to speak about our program at conferences and we have other hospitals visit to learn what we are doing here."

Wellness starts within the Hospital, where staff participate in a Wellness Program designed to improve their health and wellbeing, and also benefits the Hospital in terms of reduced work injuries and medical claims. Many of the staff have participated in Wellness University, a six-class program to become wellness role models. This class was recently opened to the community at no cost, with excellent response.

Wellness is the idea driving many Hospital programs, from the workplace wellness programs we have piloted this year with a couple of local organizations, to the Compass Health Assessment Center formed as a partnership with Parkpoint Health Clubs, even to the emphasis on nutritious meals now served to patients and in the Hospital's café.



Our commitment to Wellness is found throughout the Hospital, from staff stretch breaks to an emphasis on the nutritious foods served to patients and in the café. The Compass Health Assessment Center, a community wellness initiative in partnership with Parkpoint Health Clubs (above) is now in its second year.



Skilled Nursing Facility Helping Patients Return To Independent Living

Sonoma Valley Hospital's award-winning Skilled Nursing Facility (SNF) provides the highest level of care for patients who no longer require acute care services but are not quite ready to return home.



Our 27-bed facility is one of the few in the North Bay to receive a top 5-star rating from Medicare. It offers round-the-clock professional medical care, including excellent nursing and access to two on-site physicians, along with access to a wide range of Hospital services.

Our SNF received the National Silver Quality Award from the American Health Care Association based on the Malcolm Baldrige criteria for excellence, becoming one of just 77 nationally and one of seven facilities in California to receive this award in 2014.



Skilled Nursing Facility Services

Our Skilled Nursing Facility provides on-site access to:

- Physical and Occupational Therapy
- Speech Therapy
- Disease Management
- Respiratory Therapy
- Educational and Support Groups
- Wound Care Nurse
- Registered Dietitian
- Hospice Program
- Psychologist
- Medical Imaging, MRI, CT
- IV Antibiotics and Transfusions
- Medical Surgical Services
- Intensive Care Unit, Emergency

SVH's Healing Gardens

One of the special features of Sonoma Valley Hospital are the Healing Gardens located throughout the grounds. The Hospital has five in all, providing patients, staff and visitors with the opportunity to slip outside to relax and enjoy nature when the weather permits.



SONOMA VALLEY HOSPITAL FOUNDATION

It has been a pivotal year for The Sonoma Valley Hospital Foundation. We began building on the incredibly successful Capital Campaign for the Hospital's new Emergency Department and Surgery Center, and in the past year have made significant progress in many areas through the continued support of our generous community:

- Because of you our Hospital has two new Ultrasound machines already used by more than 2,500 patients.
- Because of you Cancer Support Sonoma became a reality and is serving clients dealing with the effects of cancer treatment. In just its first few months, more than 250 treatments have been provided.
- Because of you nearly 100 women participated in Project Pink and received no-cost mammograms that they could not otherwise afford.
- Because of you we are well on our way toward bringing 3D Mammography to Sonoma.

On the following pages we honor the many donors who stepped forward this year to make a difference for the Hospital and the patients it serves. Because of your investment, Sonoma Valley Hospital truly is an indispensable part of our community, providing the best possible care and a critical safety net for emergencies. With your help, we have a Hospital that continues to be nationally ranked for safety, quality of care, and staff satisfaction.

Annual giving is essential to the continued success of the Hospital. The terrific response to the Capital Campaign was a wonderful start, and sustained gifts ensure that our Hospital will continue to excel. We ask that you consider a gift to the SVH Foundation in the coming year.

Dave Pier
Executive Director

Marcia Levy
Board Chair

Inspiring Support for Sonoma Valley Hospital



BOARD MEMBERS: (L-R) Roger Nelson, Marcia Levy, Chair, Jim Lamb, Jerome Smith, MD, Kevin Jaggie, Nancy Lilly, David Good and Dave Pier, Executive Director. (Not shown: Jean Arnold Sessions and Buddy Pepp)

Our volunteer board is instrumental to the success of the Sonoma Valley Hospital Foundation. We extend our deepest appreciation and gratitude to the Board of Directors for the generous gift of their time, enthusiasm and expertise on behalf of the Hospital and the community it serves.

ABOUT THE FOUNDATION Sonoma Valley Hospital Foundation is a not-for-profit 501(c)(3) organization with a mission to cultivate community support and raise funds for Sonoma Valley Hospital. Your contributions assist the Hospital to maintain, improve and restore the health of everyone in our community. Since its founding in 1982, the SVH Foundation has raised millions from individual donors, charitable foundations and corporations to enhance medical services, purchase equipment, establish support programs, and to help cover the Hospital's cost of caring for patients who could not otherwise afford to pay.



**SONOMA VALLEY HOSPITAL
FOUNDATION**

Inspiring Support for Sonoma Valley Hospital

Legacy Gifts Give Back to Everyone

Anyone can make a meaningful contribution that lasts beyond your lifetime. By making a planned gift, you can have an impact and help the Hospital to address the health needs in our community.

Please let us know if you have questions or have already named SVHF in your estate plans.

Contact:

Dave Pier, Executive Director • 707.935.5070
dpier@svh.com • svh.com/foundation



"Sonoma Valley Hospital is a treasure in our community. Not only has our family benefited from its wonderful services over the years, but we have also seen it grow into a first-class community Hospital. We have chosen to include the Hospital in our estate plans to ensure that it continues to serve Sonoma Valley with the best possible health care." – Jim Lamb

Celebration of Women

The Sonoma Valley Hospital Foundation held its 10th annual Celebration of Women luncheon on May 21, 2015, at The Lodge at Sonoma Renaissance Resort & Spa. Proceeds benefitted women's health and wellness programs at Sonoma Valley Hospital. This year's event honored **Gerry Brinton** and **Lorrie Hohorst** with a Pulse Award to recognize their many contributions to the community through volunteerism, community involvement and philanthropy.



Kelly Mather and Dr. James DeMartini



Dr. Jerome Smith, Jane Hirsch and Dr. Robert Cohen



Pulse Award recipients Lorrie Hohorst and Gerry Brinton



Gary Nelson, Lorrie Hohorst and Karen Collins



Fe Sendaydiego and Maggie Haywood



Brenda Buckerfield, Valeria Arelt, Gerry Brinton and Gretchen Gardner

Foundation Donors

We gratefully recognize the following donors for their gifts to SVH Foundation.

July 1, 2014 to June 30, 2015

GIFTS OF CASH

\$100,000+

Gerry and Bill Brinton
Mary Lester
Martha Murphy and Jack Leahy
Pam and John Story

\$50,000-99,999

Sarah and Darius Anderson
James Lamb
Leslie and Mac McQuown
The Miner Foundation
Marcia and Gary Nelson
North Bay Cancer Alliance
Arline and Buddy Pepp
Sonoma Wine Country Weekend
Lynn Woodward

\$20,000-49,999

Kimberly and Simon Blattner
Ms. Marianne Dahlberg
Diane and Peter Donnici /
Hillblom Foundation
Grieve Family Charitable Trust
Phyllis and John Gurney
Nancy and Tony Lilly
Mary's Pizza Shack in memory
of Mary Fazio
Kristen McFarland and Bill Jasper
Rotary Club of Sonoma Valley
Sangiaco Family

\$10,000-19,999

Julie and Tom Atwood
Susan and Lew Cook
The Donnelley Foundation
Barbara Howard
Cherie and Keith Hughes
Mary Clark Janis
Jean Arnold Group
Foundation
Esty and Tom Landy
Carlene Mendieta and
Walter Bowe
Scott Smith and Marcelo
DeFreitas
Union Bank Foundation

\$5,000-9,999

Anonymous (2)
Jean Barnier and John
MacConaghy
Brennie and Larry Brackett
Suzanne Brangham and
Jack Lundgren
Brenda Buckerfield and
Tommy Mensing
Comprehensive Pharmacy
Solutions
Catherine and David Good
Jane Hirsch and Jeff
Splitgerber
Bob Kowal and Mark Sipes
Maribelle and Steven Leavitt
Sandra and John Leland
Marcia and Jim Levy
Maryon Lewis
Sharon and Jim Lynch
Marin Medical Laboratories
Patricia and Kenneth McTaggart
Monica and Roger Nelson

Betsy and Ken Niles
Dr. Steve Maron-Valley
Emergency Physicians
Connie and Phil Woodward

\$2,500-4,999

Judith Bjorndal, M.D. and
Ronald Wallachy
Nancy Blankinship and
Mike Hedley
Mollie and Dennis Collins
Kevin D. Coss, Vertran Associates
Katherine and Tom Culligan
Victor de Beck
Harriet and Randy Derwingson
Envolve Winery
Jennifer Hainstock
Susan and Dennis McQuaid
Meritage Medical Network
Prima Medical Group
Vanessa and Rand Rognlien
Rose Mary and Ed Schmidt
Sonoma Raceway
Western Health Advantage

\$1,000-2,499

Archer Norris
Nicholas Benz
Victoria and Steve Berezin
Nancy and Bill Boerum
Terry Gamble Boyer and
Peter Boyer
Nancy and Hank Bruce
Joan and Michael Buckley
Lorraine and John Buckner
Ethel and Gene Daly
Paula Davis
Dagmar Dolby
Lisa Duarte
Lynette Feeney-Burns

Carolyn and Dick Fogg
Laurie and Bill Friedeman
Gretchen and Robert Gardner
Jane Giovacchini
Jane and Glenn Hickerson
Lorraine and Peter Hohorst
Mrs. Betty Jimenez
Deborah and Robert Kweiler
Holly and Steve Kyle
Sheila and Paul Leach
Yong Q. Liu, MD and
D. Paul Amara, MD
Susan MacMillan
Kelly and Rick Mather
Diane and Henry Mayo
McKesson Corporation
Lois and Jim McVeigh
Midstate Construction
Kathy Miller
Elizabeth and Michael Minigan
Montan Family Foundation
Sharon and Richard Nevins
Susan and Richard Olness
Judy and Steve Page
Helen and Blair Pascoe
James Price, M.D.
Nancy Ramsey and
Russell Schweickart
Martha and Stephen Rosenblatt
Maggie Salenger and
Peter Haywood
Sound Physicians
Jeannette C. Tarver
Vera C. Hendry Foundation
Marcie and David Waldron
Patsy and Rick Wynne
Xenex Disinfection Services
Judy and Chuck Young
Laura and Jeff Zimmerman

Up to \$999

Anonymous (22)
Kathryn Aanestad and Veda Lewis
Patricia and Richard Adam
Suzanne and Roger Adams
Madolyn and Richard Agrimonti
Karen Albertson
Sue and Robert Anderson,
Anderson Tree Service
Jan and Tim Arensmeier
Jean Arnold Sessions
Arlene and Kon Balin
Lyman Ballard
Linda and Earl Behrens
Janet and Chris Bensick
Kelli and Alan Berezin
Maria Biasetto
Diane and Stephen Bieneman
Arlene and Norman Bird
Dr. B.J. Bischoff
Clare and John Bock
Ligia and Donald Booker
Ellen and Drew Bradley
Maryanne Brady
Brayton Purcell, LLP
Robin and Stephen Brett
Brenda and Richard Brooks
Patricia Brooks
Joanna Brown
Anne and Richard Bryan
Nancy and Jim Bundschu
Anne Butler
Mr. and Mrs. Martin Campbell
Louann Carlomagno
Kathleen and Jack Carter
Blythe and Robert Carver
Celtic Commercial Finance
Norma and Henry Cesena
Veessa Chance
Maribel Chavez

Laura Chenel and John Van Dyke
Carol and Alfred Chiantelli
Suzanne Clark
Stephanie Clark
Michael Colhouer
Mary and Mike Colhoun
Karen Collins
Christy and John Coulston
Christine and Paul Crowley
Gina Cuclis
Josephine Davis
Eve De Martini
Lynne Deegan-McGraw
Carrie A. De Fere
Georgette Delclaux
Gordon Deluca
Dr. and Mrs. James DeMartini
The Denning Family
Cynthia and Bill Denton
James Dolan, MD
Michelle and John Donaldson
Sandy and Dick Drew
Kimberly Drummond
Susan and Joe DuCote
Thelia Eagan
Dr. Howard M. Eisenstark
Patricia and Ted Eliot
Stacie and Jad Elkhoury
Margaret and Todd Evans
Jeanette and Whitney Evans
Janet and Joseph Fahrendorf
Star Fales
Beth and Don Farris
Winnie Farwell
Molly Fedorchak
Katherine Fegan
Tamara Ferguson
Helen Fernandez
Jette and Michael Franks
Christine and Gilbert Freeman

Friedman's Home Improvement
Margaret and Michael Fuson
Gemma Gallovich and Ted Cutler
Cathryn Garlinghouse
Diane and Todd Garrett
Doreen and John Garvey
Elinor Gatto
Priscilla Gilbert
Mark Gilroy
Shari Glago
Sally and Robert Gmelin
Marg Gobert
Susan and Norman Goldstein
Elizabeth Gomes
Ann and David Gordon
Wendy and Richard Graham
Margaret and Arthur Grandy
Patti Greene
Gail T. Grimes and
Claude Whitmyer
Patricia and Robert Hackman
Nicolaos Hadjiyianni
Alice and Peter Hall
Yvonne Hall
Maud Hallin

Donna Halow
Byron Hancock and
Len Handeland
Katherine Hanes
Carol and Richard Hanna
Kay and Roger Heigel
Pattie and Kray Hensley
Alicia and Marty Herrick
Doryce Hills
Karen and John Hirsimaki
Douglas Holt
Maynard and Lucius Horiuchi
Jennifer Hudson
Ellen and Thomas Labruce
Polly and Gary Hulquist
Joanne Hurley
Susan and Richard Idell
Helen Issel
Mary Lou and Henry Jacobsen
Francoise Jacot
Sanette and Kevin Jaggie
Dyan Jamison
Joy Jenkins
Donna and Alan Johnson
Lynne Joiner



Julie Jones
 Joseph Kanon
 Mr. Don Keenan
 Joanna Kemper
 Gregory Klass
 Sharon Knight
 Celia Kruse de la Rosa
 Barbara Kully
 Betsy Kutska
 Paula Lattimore
 Hsien Ling
 Susan and Douglas Lobsinger
 Ann Loftus
 Dr. Sheldon Losin
 Leslie and Perla Lovejoy
 Susan Lowe
 Rose and Dr. Frank Lucchetti
 Robert Lutolf
 Lewis Manchester
 Elpidio C. Mariano, M.D.
 Kathy and Al Mazza
 Mary McEachron
 Penny and Doug McKesson
 Manuel R. Merjil and Paul P. Curreri
 Joe Miccio
 Martha and Leslie Middendorf
 Doris and Ronald Middlebrook
 Barbara Jean Miller
 Joanne Miller
 Heidi and Ralph Mitarai
 Joyce and John Moldovan
 Mirja and John Muncy
 Miner and Helen Munk
 Ms. Roda L. W. Myers
 Cindi Newman and Nikki Marshall
 Barbara Nobles
 Cleopatra and Salvatore Nogara
 Mary Randolph Norton
 McKenna O'Rourke
 Patty Ochoa
 Diane and James O'Donnell

Lisa and David O'Hara
 Sonoko Ohwaki
 Dorinda Parker
 Tery and Daniel Parks
 Donald Parks
 Patt's Copy World
 Heather Patz
 Stephanie Pearson
 JaMel and Thomas Perkins
 Beverly and J. Lewis Perlson
 Nan and Pat Perrott
 Barbara White Perry
 Wendy and Bucky Peterson
 Sara Peterson
 Anna Pier
 Valerie Pistole and Jeffrey Walter
 Sandra and Richard Pollack
 Stephanie Pugash
 Carmen Ramos
 Virginia and Peter Ramsey
 Karen and George Rathman
 Bob Rice
 Marta and Ronald Rich
 Kay Riper
 Jane and John Robb
 Linda Rockstroh and Gary Neville
 Deborah Rogers
 Sue and Morton Rubin
 Christine Russell and
 Mark Schlesinger
 Josh Rymer and Timothy Frazer
 Mabeth and Bill Sanderson
 Debbie and Larry Saros
 Cecelia and Wayne Schake
 Kim and Leslie Schuh
 Mary-Ann and Richard Shafer
 Denise and Rey Silver
 George Simms
 J. Nevin Smith, M.D.
 Gregory Smith
 Ellen and Bob Smoke

Sharon Somogyi
 Sonoma Valley Mentoring Alliance
 Sonoma Valley Woman's Club
 Eleanor Sparrowe
 Jessica A. Spring
 Kathryn Statton
 Margret and Hans Steuck
 Diane Stewart and David Zezza
 Patricia R.A. Stillman
 Carolyn J. Stone
 Sandra Stout
 Mr. Tom Takeuchi
 Hilda Teran-Franklin
 and Ronald Franklin
 Steve Tiller
 Nancy Troy de Wit and Wim de Wit
 Ronit Milstein Tulloch
 Umpqua Bank
 Vadasz Family Foundation
 Tjiska Van Wyk
 Vintage House
 Susan Walker
 Judith and John Walsh
 Joseph Wasilewski
 Lucy Weiger and Bob Crane
 Barbara and Brandon Wells
 Betty and Allan Wendt
 Alan Wilkie
 Robin and Michael Winton
 Christina E. Wolfenden
 Lai Sheong Wong
 Vicki Woodhead and Ernie King
 Cynthia and Ken Wornick
 Jennifer and Jimmy Yamakawa

Gifts in Kind

Russell and Peggy Bair
 Arlene and Kon Balin
 Selma Blanus
 Gerry and Bill Brinton
 Call Of The Sea

Cline Cellars
 El Dorado Kitchen and
 El Dorado Hotel
 Envolve Winery
 The Epicurean Connection
 The Fairmont Sonoma Mission Inn
 Footcandy
 the girl and the fig
 Gloria Ferrer Caves and Vineyards
 Norman and Susan Goldstein
 Hanzell Vineyards
 Peter Haywood and
 Maggie Salenger
 Jacuzzi Family Vineyards
 Landmark Vineyards
 Leaderglass
 MacArthur Place Inn & Spa
 Maxwell Nails
 Mac and Leslie McQuown
 Muscardini Cellars
 Richard and Sharon Nevins
 Grace and David Noyes
 Parkpoint Health Club
 Patz and Hall Winery
 Thomas and JaMel Perkins
 Pharmaca
 Rose Mary and Edward Schmidt
 Sojourn Cellars
 Sonoma Golf Club
 Sonoma Index-Tribune
 Hilda Teran-Franklin and
 Ronald Franklin
 Three Sticks
 Transcendence Theater
 Vella Cheese Co.
 Wellington Vineyards
 Yoga Community

*We regret any errors
 or omissions.*



Contact Information For Hospital Services

You can also visit our website at svh.com for more information.

SONOMA VALLEY HOSPITAL

347 Andrieux Street, Sonoma, CA 95476

General Number 707.935.5000

Fax 707.935.5027

Admitting 707.935.5022

PreRegistration 707.935.5025

Fax 707.935.5439

The Birthplace At Sonoma Valley Hospital

Classes For Expecting Parents and New Moms. Call to arrange a tour.

Phone 707.935.5301 • **Fax** 707.935.5305

Cardiopulmonary Services

Phone 707.935.5045 • **Fax** 707.935.5046

After Hours 707.935.5000

Cardiopulmonary Department is open 7:00 am to 3:00 pm, Monday through Friday.

There is a Respiratory Therapist on staff 24 hours a day, 7 days a week. You can reach the Respiratory Therapist during off hours by calling the main hospital telephone number: 707.935.5000.

Emergency Department

Phone 707.935.5100 • **Fax** 707.935.5110

Healing At Home – Skilled Home Health Care

Phone 707.935.5135 (8:30 am – 5:00 pm)

7 days a week.

Email: healingathome@svh.com

Laboratory

Phone 707.935.5185 • **Fax** 707.935.5437

Pre-register by calling 707.935.5025.

Monday through Friday, 7:00 am to 5:00 pm, and Saturdays 8:00 am until noon. Please be sure to check in with Admitting prior to going to the Lab.

Medical Imaging (Radiology, X-Ray, CT)

Monday through Friday, 7:30 am to 5:30 pm

Phone 707.935.5235 • **Fax** 707.935.5430

Medical Records

Phone 707.935.5250 • **Fax** 707.935.5434

Nurse Navigator for Total Joint Replacement and Elective Surgeries
Phone 707.935.5378 • **Fax** 707.935.5026

Nutrition Counseling

Allison Evanson, MS, RD

Phone 707.935.5287 • **Fax** 707.935.5427

Occupational Health

Phone 707.935.5470 • **Fax** 707.935.5461

Patient Accounting

Phone 707.935.5325 • **Fax** 707.935.5319

Rehabilitation & Physical Therapy

Hand and Physical Therapy

19312 Sonoma Hwy, Sonoma

Monday to Friday, 7:00 am to 5:00 pm

Phone 707.935.5345 • **Fax** 707.935.5423

Speech Therapy is located within the Hospital

Phone 707.935.5375

Skilled Nursing Facility

Phone 707.935.5120

Travel Medicine

Phone 707.935.5470 • **Fax** 707.935.5461

Weight Loss/Bariatric Surgery (Prima)

Phone 707.938.3870 • **Fax** 707.938.3076

Wound Care Clinic

Phone 707.935.5270 • **Fax** 707.935.5272

Monday, Wednesday, Thursday and Friday, 8:00 am to 4:30 pm • Tuesday, 8:00 am to noon

Sonoma Valley Hospital Foundation

Dave Pier, Executive Director

Phone 707.935.5070 • **Fax** 707.935.5071

Email: dpier@svh.com

347 Andrieux Street, Sonoma, CA 95476

www.svh.com/foundation

Cancer Support Sonoma

A program of Sonoma Valley Hospital Foundation. For information:

Phone 707.935.5244

Email: infocancersupport@svh.com

A patient intake form is available on line at svh.com/foundation/css, or contact us.





SONOMA VALLEY HOSPITAL
347 ANDRIEUX STREET • SONOMA, CA 95476
WWW.SVH.COM • 707-935-5000