



# SONOMA VALLEY HOSPITAL Community Report 2016

# Sonoma Valley Health Care District BOARD OF DIRECTORS 2016



**Jane Hirsch**  
Chair



**Sharon Nevins**  
Treasurer



**Peter Hohorst**  
1st Vice Chair



**Bill Boerum**  
Secretary



**Joshua Rymer**  
2nd Vice Chair



**Sonoma Valley Hospital** was founded in 1946 as a non-profit district hospital. It is governed under the Bylaws of the Sonoma Valley Health Care District with oversight by a publicly elected Board of Directors. Directors serve four-year terms, with elections taking place during general elections for local, state or national offices.

The Mission of the Sonoma Valley Health Care District is to maintain, improve and restore the health of everyone in our District, which encompasses the entire Sonoma Valley with the exclusion of Kenwood.

As part of the Sonoma Valley Health Care District, the Hospital is supported primarily by revenues from services, augmented by taxpayer support in the form of a parcel tax, charitable bequests and donations. The Sonoma Valley Hospital Foundation plays an integral role in Hospital fundraising efforts.

## Letter From The Board Chair

# A Commitment To Quality And Safety

This year we had the pleasure of celebrating Sonoma Valley Health Care District's 70th anniversary. The occasion reminded us just how impressive our Hospital is with its state-of-the-art Emergency Department and Perioperative suites; dedicated staff, physicians, volunteers and leaders; generous philanthropic community; and a strong and experienced Board of Directors.

Also impressive is the Hospital's commitment to its quality and safety programs. The quality standards at SVH reflect the high standards and evidence-based practices embraced by leading national and California organizations, including Centers for Medicare and Medicaid Services (CMS), National Healthcare Safety Network/CDC (NHSN), California's Office of Statewide Health Planning and Development (OSHPD), and the California Department of Public Health (CDPH), among others.

Sonoma Valley Hospital is fully accredited by the Center for Improvement in Healthcare Quality and meets and exceeds these national standards. Although SVH is a small community hospital, the same national quality standards apply to all hospitals, regardless of size, and we compare very well with hospitals nationally. For example, our Surgical Care Quality Outcome Measures meet and exceed national benchmarks, and our Hospital Acquired Infection Rate is lower than national benchmarks.

The Quality Committee reviews and oversees quarterly "scorecards" tracking relevant indicators. Most of these are quality and safety elements that must be submitted to CMS and impact the Hospital's Medicare reimbursement. For the last several years, SVH's high scores have earned it bonus payments from CMS and, in July, SVH received a 4 star rating (out of 5 possible) from CMS, reflecting its excellent performance on national quality measures.

As current Board Chair, I'm delighted to acknowledge the valuable role our Hospital plays in maintaining and enhancing the health and wellness of the residents of our District, and I want to express my deepest appreciation to all whose contributions play such a critical role in the Hospital's continued success.

Jane Hirsch, RN, MS, Chair of the SVHCD Board of Directors

**“Although SVH is a small community hospital, the same national quality standards apply to all hospitals, regardless of size, and we compare very well with hospitals nationally.”**





**Kelly Mather**  
President, CEO

### Celebrating 70 Years!

This year we celebrated the 70th anniversary of the Sonoma Valley Health Care District which was formed in 1946 to build the current hospital and ensure that Sonoma Valley residents have access to quality health care and emergency services.

The Hospital has been the sole focus of the District since its inception. With strong District and community support, SVH has played a critical role in making our Valley a healthier place, and has contributed on a number of levels.

**Emergency Services.** The Hospital's emergency services provide a safety net for the entire Valley. Our Emergency Department stands ready 24/7, and since we opened our new ED, visits have increased by 20 percent to over 10,000 annually. Our new Surgery Center also has become busier, and we now have three general surgeons.

**Specialist Services.** We've expanded services and added new physician specialists so residents have less reason to travel to other communities for care. One way we've drawn specialists to Sonoma is by opening two new timeshare offices, allowing physicians to hold office hours here even though the number of local patients may not support a full-time practice in a specialized area. In the past year we've added 11 new specialists and we will announce more in the coming year.

**“With strong District and community support, SVH has played a critical role in making our Valley a healthier place.”**

**Community Health.** We continue working to improve the health of our community. In recent years, we've implemented a number of local population health programs, many in partnership with other community organizations. These include initiatives designed for seniors, schools, women and the Latino community. Our goal is to help make Sonoma Valley one of the healthiest places in the country.

**Economic Health.** Often overlooked is how SVH contributes to the economic health of our Valley. We are one of the largest employers and have an economic impact of around \$100 million annually, according to a recent economic impact study. We employ 476 people with an annual payroll of nearly \$30 million.

Sonoma Valley Hospital has certainly changed over the years, often dramatically as the historical photographs in this report illustrate, but the caring, attentive staff and deep commitment to provide the community with a warm, comfortable place of healing is unchanged. We remain deeply committed to the health of everyone in our Valley.

**Kelly Mather, President and CEO**  
Sonoma Valley Hospital



# SONOMA VALLEY HOSPITAL 2016 HIGHLIGHTS

The past year saw considerable progress in many service areas of the Hospital, from the upgrading of equipment in several departments to the addition of new specialist physicians and surgeons. We also can report strong growth in revenues. Following are highlights of the past fiscal year (July 1, 2015 – June 30, 2016).



## Quality Health Care Committed To The Highest Levels Of Quality And Safety

While a small community hospital, Sonoma Valley Hospital adheres to the same standards that apply to all hospitals and our quality and safety performance compares well with hospitals nationally regardless of size. Our staff and physicians provide excellent patient care that meets and frequently exceeds national benchmarks.

In its latest evaluation of hospitals released in mid-2016, the Centers for Medicare and Medicaid Services (CMS) gave Sonoma Valley Hospital a 4-star rating out of 5 possible, which places us among the top 25 percent of hospitals nationally for quality outcomes. For more information, visit Hospital Compare at Medicare.gov. Our home health care program, Healing At Home, also has 4 stars from CMS, and our Skilled Nursing Facility has earned 5 stars.

SVH continues to invest in state-of-the-art technology and this year we upgraded equipment in both the Laboratory and Radiology Departments. With support from generous donors, the Sonoma Valley Hospital Foundation has raised funds for a state-of-the-art 3D mammography unit which will be installed in 2017. The Foundation also provided the Hospital with new fetal monitors for The Birthplace.

This year SVH was selected as one of 37 California district hospitals to participate in a statewide initiative to improve health care at the local level. The initiative is funded by the Centers for Medicare and Medicaid Services (CMS) and administered by the California Department of Public Health. SVH will work to improve care transitions for Medicare and Medi-Cal patients in the Sonoma Valley with the goal of reducing hospital readmission rates.

## Physician Partnership Meeting Medical Needs Here At Home

We are proud of the strong partnership we have with our physicians, a partnership that continues to grow. In the past year, we've expanded the medical services available to Sonoma Valley residents by assisting specialist physicians to practice in Sonoma through two new timeshare offices we created. Currently, there are 138 physicians affiliated with the Hospital, allowing District residents to find most of the medical services they need close to home.

Sonoma residents now have access locally to the following medical specialists in addition to many excellent primary care physicians. To find a physician, visit the "Find A Doctor" section on our website at svh.com.

- |                                    |                       |                  |
|------------------------------------|-----------------------|------------------|
| Anesthesiology                     | Occupational Medicine | Plastic Surgery  |
| Bariatric Surgery<br>(Weight Loss) | Ophthalmology         | Podiatry         |
| Cardiology                         | Orthopedic Surgery    | Primary Care     |
| Colorectal Surgery                 | Pain Management       | Radiology        |
| Dermatology                        | Pathology             | Spine Surgery    |
| Emergency Medicine                 | Pediatrics            | Urology          |
| ENT (Ear, Nose and<br>Throat)      | Pediatric Cardiology  | Vascular Surgery |
| Family Practice                    |                       |                  |
| Gastroenterology                   |                       |                  |
| General Surgery                    |                       |                  |
| Hematology                         |                       |                  |
| Hospitalist                        |                       |                  |
| Infectious Disease                 |                       |                  |
| Internal Medicine                  |                       |                  |
| Nephrology                         |                       |                  |
| Obstetrics &<br>Gynecology         |                       |                  |



The Hospital's second physician timeshare office opened this year on West Napa Street.

Sonoma Valley Hospital

# SNAPSHOT

July 1, 2015 - June 30, 2016

## SERVICES

**11,610**

Radiology Visits

**5,285**

Mammograms

**1,423**

MRIs

**28,509**

PT Treatments (OP)

**11,283**

Home Health Visits

## HOSPITAL

**138**

Affiliated Physicians

**113**

RNs

**476**

Employees

**\$29.3M**

Annual Payroll

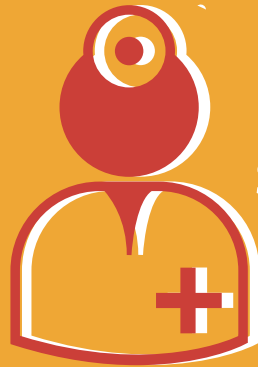
**33**

Auxiliary Volunteers

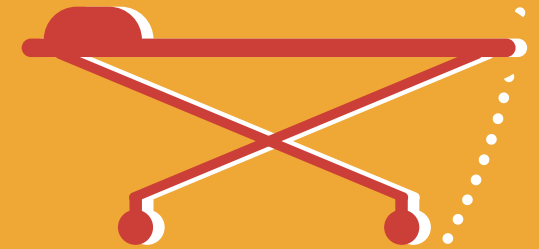
**10,648**  
Emergency  
Room Visits



**1,583**  
Surgeries



**20% Increase**  
in visits since new  
ER opened in 2014



**143,042**  
Lab Tests



**174**  
Babies Born



# Community Health

## Helping To Make Sonoma A Healthy Community

In recent years, SVH has provided District residents with diverse and frequently innovative programs to improve health and wellness. Our robust Population Health initiatives serve the community through health education programs, clinics, workshops and screenings, along with a number of patient coaching and counseling services.

We partner with outstanding local organizations for many of these programs, including the Sonoma Valley Community Health Center, Vintage House, the Sonoma Valley Unified School District, La Luz Center, and many community groups. In 2016, more than 2,300 residents participated in health events which ranged from lectures on active aging to vaccination programs for students.

This year we were named one of 37 hospitals in California to participate in a five-year initiative funded by the Centers for Medicare and Medicaid Services (CMS) and administered by the California Department of Public Health, with the goal of improving care transitions for Medicare and Medi-Cal patients when they leave the hospital, and reducing readmission rates.



**SVH dietitian Allison Evanson** discusses nutrition basics with members of a visiting Girl Scout Troop.



**Expecting parents** attend one of the childbirth preparation classes held regularly at the Hospital.



**SVH participates** in the Community Health Fair held at the Community Health Center.



**Hospital CMO Dr. Robert Cohen** discusses Advance Health Care Directives at a community meeting.



# Financial Report

## Strong Revenue Growth But Margins Continue To Tighten

As a small hospital, we continue to be greatly impacted by changes in health care reimbursement and this requires constant adjustments as we fine-tune expenses to match revenues. While we saw revenues grow this year by nearly 8 percent to a record \$55 million, driven by increased surgeries and higher volumes in several outpatient areas, this was offset by several cost factors including higher physician and staff compensation and reduced margins due to our payer mix.

SVH, like most community hospitals in California, is heavily dependent on reimbursement from government sources. In the past fiscal year, more than 60 percent of our revenue came from federal and state reimbursement, mainly Medicare, while traditional commercial insurance continued to decline.

These trends are important because while commercial insurance reimbursement is higher than our costs of providing care, federal and state reimbursements are below our costs. Due to continuing government insurance mandates to reduce hospital inpatient care, government reimbursement is not likely to improve. This means that increased volumes do not necessarily translate into improved margins.

This is why, as a small hospital, it's essential we maintain a laser-like focus on operating efficiency. In the past year, we have continued to identify areas where we can control costs and improve margins. We have strengthened financial performance in a number of areas, including Obstetrics, Home Health and Skilled Nursing,

while maintaining a high level of patient care. We've also kept routine capital investment at 60 percent less than was budgeted.

It's important to note that the Hospital receives 92 percent of its revenue from services; the rest comes from the Parcel Tax and philanthropy. Community support continues to be essential to our maintaining key services during this challenging time in health care.

On a positive note, we improved our EBIDA rate to 4.4 percent, or \$2.4 million this year, a good rate for a small hospital and better than last year's 3.8 percent. EBIDA (Earnings Before Interest, Depreciation, and Amortization) is an important measure of a hospital's financial performance.

	2016	2015	2014
Operating Revenues	\$55,013,096	\$51,394,060	\$50,575,675
Operating Expenses	\$58,352,771	\$56,073,510	\$54,611,766
Operating Margin	\$ (3,339,675)	\$ (4,679,450)	\$ (4,036,091)
Total Non-Operating Revenues / Expenses	\$ 3,696,683	\$ 4,135,951	\$ 3,263,456
Capital Campaign/ Restricted Contributions	\$ 1,022,734	\$ 1,171,395	\$ 3,757,072
Increase in Net Assets	\$ 1,379,742	\$ 627,896	\$ 2,984,437



## District Celebrates 70 Years!

This year marked the 70th anniversary of the Sonoma Valley Health Care District which was formed in 1946 through a community vote. Back then, Sonoma's new Health Care District board worked with community leaders to plan and build the current Hospital that opened on Andrieux Street in January 1957 on land donated by August and Sylvia Sebastiani.

Over the years, the Hospital was expanded and modernized several times to meet community needs, most recently in 2013 when we completed a comprehensive renovation and also constructed a new wing housing a modern Emergency Department and Surgery Center. We wish to express our deepest appreciation to Sonoma Valley residents for all that you have done and continue to do to make ours a model community hospital.

**Sonoma's New Hospital.** These photographs show the Hospital right after it opened on Andrieux Street in January 1957 with 35 acute care beds. This original structure remains today although surrounded by later additions.



**Hospital Groundbreaking.** Ground was first broken at the site of the new Hospital on May 20, 1955. Turning the first spadeful was David A. Pfeiffer, district board chairman. Looking on, left to right, were: Mitchell Van Bourg, architect; I.S. Shainsky and Bob Filmore, directors; Mrs. Charles Kelly, nurses superintendent; Lena Groskopf; James Douth, hospital administrator; contractor Al Douglas; Mrs. Esther Pierce, cook; Richard Peterson, representing co-contractor Ed Peterson; Joan McGrath, representing the Sonoma City Council; and hospital trustee John Cotton.



**The West Wing Added In 1972.** SVH opened the three-story west wing, a major expansion that increased the Hospital's number of beds to 89. Initially, the first floor housed a number of Hospital departments and the second floor had patient rooms. The third floor was left open for future expansion.



**Enduring Values.** Sonoma Valley Hospital has certainly changed over the years, often dramatically, but the caring, attentive staff and deep commitment to provide the community with a warm, comfortable place of healing remains unchanged.



# Hospital Services Report

Sonoma Valley Hospital provides the Valley with a warm, comfortable place of healing in a facility significantly upgraded with state-of-the-art technology. Here is an update on the many services we provide, beginning with our highly regarded Emergency Department.

SVH'S MODERN EMERGENCY DEPARTMENT



## Emergency Services Providing A Safety Net For The Sonoma Valley

Sonoma Valley residents and visitors made good use of the Hospital's Emergency Department during the past year.

Emergency visits have grown by nearly 20 percent since the new ED opened in early 2014, and SVH now receives more than 10,000 emergency visits annually. To meet growing demand, this summer the department added another nurse per shift and also added physician hours during busy periods.

"Patient satisfaction with SVH emergency services, as evaluated by government HCAHPS surveys, continues to be high,

and our wait times are well below the national average," reports Mark Kobe, RN, MPA, Chief Nursing Officer.

This year, in an effort to insure the Hospital receives input from the community, SVH created a patient experience team that is involving community members to provide input on how the ED, and other SVH services, are doing in meeting community expectations, Kobe said.

SVH is one of 26 hospitals statewide participating in this program to develop patient and family advisors from the community.



"I was admitted to your ER with a rattlesnake bite. I spent approximately six hours in emergency and then was transferred upstairs to your Intensive Care Unit where I spent the next two days. **Every single person I encountered in that stay was warm, caring, professional and obviously highly competent.** There was not a moment at which either I or my husband doubted that we were getting the absolute best care possible."

—Lynda Powell, Sonoma Visitor

“I was impressed not only with Dr. Brown and the staff in his office, but with the whole experience yesterday at SVH. **As I told my wife, I have never had a better experience in any hospital than I had at your facility.** You should be rightfully proud.”

– Richard Krell, Resident

## Surgery

### Surgery Center Sees Solid Growth

SVH’s modern Surgery Center, which opened in early 2014, continues to draw praise from surgeons and has seen an increase in surgeries, handling more than 1,500 surgeries in the past year. The Hospital also has increased the number of general surgeons to three.

While most surgeries involve local patients, the Surgery Center is increasingly drawing patients from outside of our area for two growing specialty areas – joint replacement and bariatric (weight loss) surgeries.

SVH has received high marks from California Healthcare Compare for hip/knee replacement surgery. California Healthcare Compare is a service provided by Consumer Reports and the California Department of Insurance.

## Acute Inpatient Care

### High Patient Satisfaction

Feedback from patients continues to emphasize the attentive care for which SVH is known. Inpatient satisfaction remains high due to the high level of care and the upgraded rooms in medical-surgical. Patients needing in-hospital care are served by a six-room Intensive Care Unit, which provides extended care for critical patients, and 15 patient rooms on the medical-surgical floor which have been remodeled and converted to private rooms to provide patients with greater comfort and privacy.

Patients feel secure because there are two physicians on duty around the clock – a Hospitalist and an Emergency physician.

While SVH, like most hospitals, has seen a decline in inpatient admissions due to health care trends, this decline has stabilized in the past year.

## Home Health Care

### Skilled Care In the Home

Health care professionals from Healing At Home, our skilled home health care service, continue to bring health care services to homebound patients. This year, staff made more than 11,000 home visits throughout the Sonoma Valley and in nearby areas.

Healing At Home is a Medicare 4 Star-rated program that provides skilled, medically necessary care to homebound patients under physician orders, helping them to live safely and independently at home.

Patients receive personalized care to meet medical and supportive needs from a staff that includes registered nurses, licensed rehabilitation therapists, social workers and certified home health aides.



It was a wonderful Mother's Day surprise. The first births began on Mother's Day morning and continued into the following day. In all, five births occurred within 24 hours, a record for Sonoma Valley Hospital and for obstetrician-gynecologist Dr. Paul Amara and The Birthplace team.



Erin Rogina, RN, BSN, Birthplace Manager, prepares one of the new state-of-the-art Panda Infant Warmers purchased for the Hospital this year by the Sonoma Valley Hospital Foundation.



## The Birthplace SVH “A High Performing Hospital”

It was a busy year at The Birthplace, our highly regarded Obstetrics Department, which delivered 174 babies this year in a safe, private and comfortable space that mothers and families value for its family-centered environment.

The personal attention for which SVH is known is readily apparent in The Birthplace. Mothers feel secure and cared for in private rooms attended to by two highly trained OB nurses who are on duty at all times, We have excellent obstetricians, pediatricians and anesthesiologists on call 24 hours a day, and access to a modern surgery center just steps away. In addition, the Birthplace has access to two experienced neonatal intensive care nurses who will assist in the unit as needed.

SVH has been recognized as one of the top 33 “High Performing Hospitals” offering maternity services in California by CHART, a state health care group. The Hospital also has been recognized by California Healthcare Compare for its low C-section and high breastfeeding rates.

The Birthplace continues to offer its popular **Childbirth Preparation Class** for second and third trimester women and their partners, as well as a **Mother and Baby Class** for new moms.

The Birthplace invites prospective parents and their family members to call and arrange a tour and allow our staff to answer questions and assist prospective parents in planning the birth experience they are seeking.



## Outpatient Diagnostics Investing In State-Of-The-Art Technology

Outpatient Diagnostic Services are an important part of the high level of care we provide patients and include a range of services in our Medical Imaging, Laboratory, and Cardiopulmonary Departments. This year, we made important upgrades in the Medical Imaging Department by investing in state-of-the-art imaging technology in several areas.

We built a **new fluoroscopy room** and installed new fluoroscopy equipment. Fluoroscopy is like a continuous x-ray which allows monitoring of body functions through a video screen. We also made important upgrades to our MRI (Magnetic Resonance Imaging) equipment.

“We recently purchased two new MRI coils that have improved diagnostic speed and accuracy, providing better results in far less time,” said Dawn Kuwahara, RN, BSN, Chief Ancillary Officer. “The new coils have enhanced our ability to closely examine soft tissue in knees, which is important for orthopedic surgery, and also provide greater detail in diagnosing the vascular system in the head and neck area.”

Thanks to generous community response to a fundraising effort by the Sonoma Valley Hospital Foundation, Kuwahara reports that the Hospital was able to purchase a state-of-the-art **3D Mammography unit** which will be installed in 2017.

## Skilled Nursing Facility Post-Acute Care Specialists

SVH is unique among hospitals in operating a Skilled Nursing Facility, one offering high level care for patients who no longer require acute care, but are not yet ready to return home. Patients in our 27-bed modern facility receive skilled medical care with round-the-clock access to two on-site physicians and the full range of Hospital services.

Our Skilled Nursing Facility meets the highest standards of care. It holds a 5-star rating from Medicare and is one of just a handful of facilities in California to receive a National Silver Achievement In Quality Award from the American Health Care Association.





## Outpatient Rehab & PT Offering Specialized Services

SVH's Outpatient Rehabilitation and Physical Therapy Department is one of the largest providers in the region with more than 28,000 patient treatments in the past year.

The service has a professional staff experienced in treating a wide range of conditions, ranging from everyday sprains and strains and work- and sports-related injuries, to more severe conditions including acute and chronic pain, tendonitis, and spinal conditions.

The Department also offers such specialized services as hand therapy, speech therapy and pelvic health therapy. The staff includes two certified orthopedic specialists trained to help patients recover from orthopedic surgery.



**“Your Physical Therapy team is outstanding and I could not be more pleased to give them my highest praise. I am now walking with ease several miles a day without a limp and zero pain. I thank you all for your help, I could not have done it on my own.”** – Brian Reagan, Resident

## Occupational Health Supporting Local Employers

In recent years, the Hospital's Occupational Health Department has grown to become a regional center serving the employees of businesses throughout the North Bay, providing medical treatment for work-related injuries.

In the past year, the Department handled more than 8,000 employee visits, ranging from fractures and lacerations to strained backs and repetitive stress injuries.



## Special Procedures Wound Care Services

SVH strengthened its commitment to providing Wound Care services this year, expanding the professional staff and bringing on Dr. Russell Sawyer as Medical Director.

Wound Care is another specialty area that differentiates SVH from most hospitals. This year, we handled nearly 3,000 patient visits.

Our Wound Care service treats patients with wounds resulting from diabetes, infection, trauma, surgery and other conditions that can cause difficulty in wound healing.

We provide an individualized approach, working closely with the patient's physician to provide outpatient treatment that will heal wounds in the shortest times with minimal pain, discomfort and scarring.



## SONOMA VALLEY HOSPITAL FOUNDATION

# It Was A Great Year!

The past year was one of considerable progress and growth for the Sonoma Valley Hospital Foundation. Thanks to the generous investment from our community, we have been able to provide significant support for the Hospital in a number of areas.

- Because of you the Hospital's Birthplace has two new infant warmers and two new fetal monitors.
- Because of you we are able to purchase a state-of-the-art 3D mammography machine that is ready to be installed in 2017.
- Because of you there will be a new Stryker Integration System installed in the operating rooms that upgrades the surgical capabilities at SVH and allows Operating Room staff to better focus on patient care.
- Because of you Cancer Support Sonoma has grown beyond expectations and has provided more than 1,500 integrative therapy sessions for patients dealing with the effects of conventional cancer treatment.

Your investment in Sonoma Valley Hospital helps to ensure the best possible care and provides a critical safety net in emergencies for our entire community. With your help, we have a Hospital that continues to be nationally ranked for safety, quality of care, and staff satisfaction.

Annual giving is essential to the continued success of the Hospital and we encourage you to consider a gift to the SVH Foundation in the coming year. Each donation helps the Hospital support our entire community.

**Dave Pier**  
Executive Director

**Kevin Jaggie**  
Board Chair

## INSPIRING SUPPORT for Sonoma Valley Hospital



**VOLUNTEER COMMUNITY LEADERSHIP** is the key to the success of the Foundation. Thank you to our Board of Directors for their time, enthusiasm, generosity and expertise. Board members are, from left: Jim Lamb, Nancy Lilly, Roger Nelson, Marcia Levy, Kevin Jaggie, Dave Pier (Executive Director), Cherie Hughes, Jerome Smith M.D., Simon Blattner and David Good. Not shown are Buddy Pepp and Jean Arnold-Sessions.

**ABOUT THE FOUNDATION** Led by an engaged and experienced Board of Directors, the Foundation, a 501c(3) nonprofit, raises funds for programs, technology and expansions at Sonoma Valley Hospital. Over the past five years more than \$12 million in philanthropic support has been put to work toward the new state-of-the-art Emergency Department and Surgery Center, and purchasing new technology such as the recent ultrasound and mammography equipment acquisitions.



SONOMA VALLEY HOSPITAL  
**FOUNDATION**

*Inspiring Support for Sonoma Valley Hospital*

## Planned Gifts Secure Our Future



*“I view Sonoma Valley Hospital as a pillar of our community. I am proud to support the Hospital and have chosen to include SVHF in my estate plans to ensure that it continues to serve Sonoma Valley with the best possible health care.”*  
~ Nancy Lilly

Anyone can make a meaningful contribution that lasts beyond their lifetime. By making a planned gift to our Hospital, you are investing in the health of Sonoma. *Please let us know if you have already named SVHF in your estate plans.*

Please contact: **Dave Pier, Executive Director**  
707.935.5070 • [dpier@svh.com](mailto:dpier@svh.com)  
[svh.com/foundation](http://svh.com/foundation)

## Celebration of Women

The Sonoma Valley Hospital Foundation held its 11th annual Celebration of Women luncheon on May 23, 2016 at The Lodge at Sonoma Renaissance Resort & Spa. Proceeds benefitted women’s health and wellness programs at Sonoma Valley Hospital. This year’s event honored **Claudia Mendoza-Carruth and Martha Rosenblatt** with a Pulse Award.



Dave Pier, Claudia Mendoza-Carruth,  
Martha Rosenblatt, Kelly Mather



Simon Blattner, Claudia Mendoza-Carruth,  
Martha Rosenblatt, Bill Boerum



Ellen Shannahan and Rose Mary Schmidt



Kevin Jaggie, Nancy Lilly, Jerome Smith, M.D.



Claudia Mendoza-Carruth and Martha Rosenblatt



Courtyard Reception



# Foundation Donors THANK YOU!

Supporting the Hospital is an investment in our community, one that benefits everyone in the Sonoma Valley. Doing so helps ensure we all have prompt access both to emergency care and a range of needed health care services. We gratefully recognize the following donors for their gifts to SVH Foundation. Our **Champions and Benefactors** have given lifetime gifts that exceed \$1 million and \$500,000 respectively. We are immensely grateful for their belief in, and support of, the Hospital, enabling significant positive impact on health care in the Sonoma Valley.

## CHAMPIONS

### \$1,000,000+

Francis O. Fink\*  
The McQuown Family  
Gary and Marcia Nelson  
Les and Judy Vadasz  
Sanford and Joan Weill

## BENEFACTORS

### \$500,000 - 999,999

Bill and Gerry Brinton

## LEGACY GIFTS

### & PLEDGES

## HERITAGE CIRCLE

## MEMBERS

Paula Davis  
Francis O. Fink\*  
June Graham\*  
Judith Groff\*  
Shirlene Harrington\*  
Kevin and Sanette Jaggie  
Jim Lamb  
Lorraine Lentz\*  
George Lentz\*  
Jim and Marcia Levy  
Nancy D. Lilly  
Kelly Mather  
Dick and Madge Miller  
Marion Miller\*  
Dave Pier  
Henry Ratz  
Lynn Woodward  
Phil and Connie Woodward

\*deceased

## Gifts and pledges made from July 1, 2015 to August 31, 2016

### GIFTS OF CASH

#### \$100,000+

Bill and Gerry Brinton  
The Miner Foundation  
Gary and Marcia Nelson  
Henry Ratz

#### \$50,000-99,999

Darius and Sarah Anderson  
Peter and Diane Donnici/  
Hillblom Foundation  
Jim Lamb  
John and Nancy Lasseter  
Jack Leahy and Martha Murphy  
Mac and Leslie McQuown  
North Bay Cancer Alliance  
Buddy and Arline Pepp

#### \$20,000-49,999

Simon and Kimberly Blattner  
John and Phyllis Gurney  
Mary Clark Janis  
Nancy D. Lilly  
Mary's Pizza Shack in memory  
of Mary Fazio  
Sangiaco Family  
Sonoma Valley Vintners  
and Growers Foundation  
Lynn Woodward

#### \$10,000-19,999

Anesthesiology Consultants  
of Marin, Inc  
Tom and Julie Atwood

Walter Bowe and Carlene Mendieta  
Michael and Joan Buckley  
Gene and Ethel Daly  
Tom and Esty Landy  
John and Sandra Leland  
Tommy Mensing and  
Brenda Buckerfield  
Timothy Mott  
Roger and Monica Nelson  
Rotary Club of Sonoma Valley  
Bill and Mabeth Sanderson  
Scott Smith and Marcelo DeFreitas  
Union Bank Foundation  
Wells Fargo Foundation  
Emory Winship

#### \$5,000-9,999

Anonymous (1)  
Lew and Susan Cook  
Randy and Harriet Derwingson  
David and Cathy Good Family  
Bill Jasper and Kristen McFarland  
Bob Kowal and Mark Sipes  
Maryon D. Lewis  
Bill and Dottie Lynch  
Jim and Sharon Lynch  
Kenneth and Patricia McTaggart  
Ken and Betsy Niles  
Jeff Splitgerber and Jane Hirsch  
VEP Healthcare, Inc.

#### \$2,500-4,999

Paul and Monica Bancroft  
Bank of Marin  
California Advanced Medical  
Imaging  
Dennis and Mollie Collins

Dagmar Dolby  
Keith and Cherie Hughes  
Bob and Deborah Kweller  
Steven and Maribelle Leavitt  
James Ledwith and  
Cathy Gellepis  
Lisa Lee  
Jim and Marcia Levy  
Marin Medical Laboratories  
McKesson Corporation  
Meritage Medical Network  
Thomas and JaMel Perkins  
Prima Medical Group  
Stephanie Pugash  
Edward and Rose Mary Schmidt  
Ronald Wallachy and  
Judith Bjorndal, M.D.  
Dr. and Mrs. Noah Weiss  
Western Health Advantage  
Phil and Connie Woodward

#### \$1,000-2,499

Anonymous (1)  
Dr. Peter Allen and Trish L. Allen  
Archer Norris  
Stephen and Valerie Arelt  
Jean Arnold Sessions  
Stephen and Victoria Berezin  
Bill and Nancy Boerum  
Peter Boyer and Terry Gamble Boyer  
Hank and Nancy Bruce  
Curt and Marchelle Carleton  
Kevin and Claudia Carruth  
Robbie and Janine Cohen  
Mike and Mary Colhoun  
Kevin D. Coss  
Paula Davis

Victor de Beck  
John and Michelle Donaldson  
Lisa Duarte  
Whitney and Jeanette Evans  
Dick and Carolyn Fogg  
Bill and Laurie Friedeman  
Claude and Lynn Ganz  
Maud Hallin  
Donna Halow  
Byron Hancock and Len Handeland  
Mike Hedley and Nancy Blankinship  
Daniel and Nana Howell  
Kimberly Hubenette  
Richard and Susan Idell  
Ken and Bernadette Jensen  
Susan Lowe  
Jack Lundgren and Suzanne Brangham  
Susan MacMillan  
Rick and Kelly Mather  
Manuel R. Merjil and Paul P. Curreri  
Michael and Elizabeth Minigan  
Montan Family Foundation  
Richard and Sharon Nevins  
Rolf C. Olness, MD  
Blair and Helen Pascoe  
Dave Pier  
Les and Donna Pinsof  
Mike and Mia Pucci  
Charles Purdom  
George and Karen Rathman  
Barry and Ann Reder  
Stephen and Martha Rosenblatt  
Joshua Rymer and Timothy Frazer  
Satellite Healthcare, Inc.  
Russell Schweickart and Nancy Ramsey  
Sonoma Valley Hospital Auxiliary  
Sound Physicians

John and Pamela Story  
Jeannette C. Tarver  
David and Marcie Waldron  
Jim and Siga Weber  
Rick and Patsy Wynne  
Chuck and Judy Young

**Up to \$999**  
Anonymous (23)  
Joe and Beth Aaron  
Richard and Patricia Adam  
Roger and Suzanne Adams  
Kenneth and Karen Adelson  
Richard and Madolyn Agrimonti  
Bob and Marilyn Albright  
Ben and Barbara Aliza  
Robert and Linda Alwitt  
Kelli Anderson  
Patrick and Pam Anderson  
Robert and Sue Anderson  
Jim and Elaine Babcock  
Kon and Arlene Balin  
Earl and Linda Behrens  
Stephen and Amy Bei  
Chris and Janet Bensick  
Maria Biasetto  
Richard A. Biersch  
Howard and Kathy Bilkiss  
Dr. B.J. Bischoff  
Ellen Black  
David and Mandy Bolling  
Victoria Bonnington  
Donald and Ligia Booker  
Marshall and Lori Bremner  
Stephen and Robin Brett  
Patricia Brooks  
Tim and Carrie Brophy  
Alden and Elaine Brosseau  
Joanna Brown  
Lee Morgan Brown  
Jim and Nancy Bundschu  
Ron and Linda Burris  
Anne L. Butler  
Cindy Butner  
Martin and Carol Campbell  
Joseph and Kimberley Carbonaro

Leslie Carlson  
Robert and Blythe Carver  
Marianne Cavanaugh  
Graziano and Diana Cerchiai  
Gian and Julia Cervone  
David Chambers and Jean Hopeman  
Maribel Chavez  
Carol Chiantelli  
Stephanie Clark  
Suzanne Clark  
Francine Clayton  
Bill and Sara Clegg  
Paul and Deborah Cleveland  
Alexandra Close  
Kathleen Cole  
Michael Colhouer  
Lou Collier  
Karen Collins  
Tom Conlon and Taylor McCandless  
Richard Conte  
James Conyers  
Patricia Cooper  
Bob Crane and Lucy Weiger  
Jim and Brigitta Crews  
Tom and Katherine Culligan  
Carrie A. De Fere  
Georgette Delclaux  
Dr. and Mrs. James DeMartini  
The Denning Family  
Cynthia Denton  
Kelly and Laverne Dicker  
Laurie Dinwiddie  
Gregory Dipaolo and  
Barbara Hughes  
Una Dockery  
Diane Doron  
Raj Dosanjh  
Richard and Sandra Drew  
Amy Duggan  
Sarah Dungan  
Gary and Ruth Edwards  
Kristi Edwards  
Kathleen Eilertsen  
Dr. Howard M. Eisenstark  
Ted and Patricia Eliot

Jad and Stacie Elkhoury  
Joseph Ellin and Jacqueline Aiken  
Marc Engel  
Melissa Evans  
Ernestine Evans  
Todd and Marge Evans  
Star Fales  
Tim Farfan  
Rev. Sandor and Brooke Farkas  
Don and Beth Farris  
Molly Fedorchak  
Katherine Fegan  
Amy Fong  
Rosemary Fox  
Ronald Franklin and  
Hilda Teran-Franklin  
Michael and Jette Franks  
Timothy J. Freeman  
Michael and Margaret Fuson  
Ray and Laurie Gallian  
Natalia Garcia  
Robert and Gretchen Gardner  
Grigory Gatenian  
Elinor Gatto  
Gayle Geary  
Philip and Cheryl Genet  
Rita George  
Mark and Pamela Gibson  
Fred and Pamela Gilbert  
Priscilla Gilbert  
Robert Glennon  
Robert and Sally Gmelin  
Rick Goodsell and Antonia Adezio  
David and Ann Gordon  
Susan Gorin  
Richard and Wendy Grahman  
Michael Greaney  
Patti Greene  
Reya Grossman  
Nicolaos Hadjiyianni  
Laurie Hake  
Yvonne Hall  
Robert Hamilton  
Katherine Wendy Hanes  
Richard and Carol Hanna

John and Dorth Hardy  
Robert Harrison  
Peter and Maggie Haywood  
John and Sherry Hedley  
Roger and Kay Heigel  
Herbert and Nancy Heil  
Vera C. Hendry Foundation  
Kray and Pattie Hensley  
Helen Herbaugh  
Linda Higuera  
Diana Hindley  
John and Karen Hirsimaki  
Fred and Kathe Hodgson  
Peter and Lorraine Hohorst  
Lance and Chelsey Holdsworth  
Marilyn Holecek  
Douglas Holt  
Lucious Horiuchi and Family  
Yee Huen Hsu  
T. Huffman-E. LaBruce  
Kimberly Hughes  
Nancy Hughes  
Stephanie Hull  
Gary and Polly Hulquist  
Joanne Hurley  
Helen Issel  
Francoise Jacot  
Eric and Gina Jacquez  
Kevin and Sanette Jaggie  
Dyan Jamison  
Dolores Jaquez  
Alan and Donna Johnson  
Cheryl Johnson  
Kevin Johnson and  
Karen Jenkins-Johnson  
Rebecca Johnson  
Tara Johnson  
Lynne Joiner  
Julie Jones  
Joseph Kanon  
Susan Keechler  
Donna Keegan  
Mr. Don Keenan  
Donna Kelly Makeup  
Joanna Kemper

Bob and Elaine Kenney  
Warren and Lynn Knudson  
Valerie Kobal  
Mark Kobe  
Celia Kruse de la Rosa  
Carl and Jackie Kuhn  
Barbara Kully  
Chris Kutza  
Dawn Kuwahara  
Lester T. Laingen  
Kenneth and Sylvia Larkin  
Paula Lattimore  
Robert Lee  
Chuck and Janice Legge  
Theresa Leigh  
Daniel Lennon  
Veda Lewis and Kathryn Aanestad  
Ednilza Lewis  
Steven Lewis  
Hsien H. Ling  
Leonard Lloyd  
Douglas and Susan Lobsinger  
Ann Loftus  
Mary Logasa  
Myron London and Lucinda Ford  
Florence Lose  
Dr. Sheldon Losin  
Leslie and Perla Lovejoy  
Jeanne Lucq  
Joseph Lunny  
Robert Lutolf  
John MacConaghy and Jean Barnier  
Lisa Mahaffey  
Amy Maher  
Lewis Manchester  
Hanna Marcus  
Drs. Stephen and Rosemarie Marks  
Kathy Mathews  
Cynthia McAleer  
Lynn McKissock  
Dennis and Susan McQuaid  
Kalliope Mead  
Brunhilde Merrill  
Joe Miccio  
Jean Miller



Joanne Miller  
Kathy Miller  
Al and Jane Milotich  
John and Joyce Moldovan  
William and Emilie Mulvihill  
John and Mirja Muncy  
Ted and Karen Nagel  
Mr. Seiichiro Nakagawa  
Shigenobu Narumi  
Elizabeth Nawrocki-Fenton  
Linda E. Rockstroh  
Cynthia Newman and Nicole Marshall  
Jeanette Newman  
Vagn and Karen Nielsen  
Bob and Cindy Nolan  
Michael and Susan Norton  
McKenna O'Rourke  
David and Donna Noyes  
Patty Ochoa  
David and Lisa O'Hara  
Skip and Deborah Olinger  
Opici Wine Group  
William Oran and Paulette Lutjens  
Donald and Judith Orr  
Dorinda Parker  
Daniel and Tery Parks  
Stephanie Pearson  
Steve and Joyce Pease  
Lewis and Beverly Perlson  
Mr. and Mrs. Patrick Perrott  
Richard Peters  
Alain and Jacquy Piallat  
Eliza Pier  
William and Anna Pier  
Pilates ProWorks Sonoma  
Glen and Catherine Power  
Rosemary Pryszmant  
Jody Purdom  
Doris Quince  
Mrs. Beverly Raaka  
Carmen Ramos  
Peter and Virginia Ramsey  
Thomas Reynolds  
Roger and Diana Rhoten  
Bob Rice

Scott and Marta Rich  
Kay Ripper  
Barry and Kate Roach  
Vanessa Robledo  
Gideon and C.J. Rosenblatt  
Natasha Rosenblatt  
Toby and Sally Rosenblatt  
Rozanski Design Inc.  
Morton and Sue Rubin  
Brooks Rumph  
Peter and Michele Saibene  
May Sasao  
Scott Sattler and Kimberly Drummond  
Dr. Andrew J. Sawicki  
August Sebastiani Foundation  
Don and Nancy Sebastiani  
Jonathan and Carol Sebastiani  
Richard and Mary-Ann Shafer  
Ellen Shannahan  
Diane Shaw  
Joseph and Anne Shea  
Barry and Lorna Sheridan  
George Simms  
J. Nevin Smith, M.D.  
Dr. Jerome C. Smith  
Bob and Ellen Smoke  
Sharon Somogyi  
Sonoma Market  
Sonoma Valley Mentoring Alliance  
Sonoma Valley Unified School District  
Jeff and Jeni Spencer  
Jessica Spring  
Craig Squires  
Tim and Kathy Statton  
Hans and Margret Steuck  
Patricia Stillman  
Dr. and Mrs. Daniel Stites  
David and Vicki Stollmeyer  
Jim and Gail Stroupe  
Dale and Gerry Swint  
Synergy Dental Group: Kimberly Hubenette  
Bryan and Julie Syrdell  
Karen Taylor  
Steve Tiller  
Lois Valenzuela

John Van Dyke and Laura Chenel  
Cheryl Van Paris  
Karen Vaughan  
John and Judith Walsh  
Jeffrey Walter and Valerie Pistole  
Karen Weir  
Brandon and Barbara Wells  
Kitty Whitaker  
Heidi Williams  
Michael and Robin Winton  
Jon Parker and Kathy Witkowicki  
Lai Sheong Wong  
Vivian A. Woodall  
Judy Wydick  
Jimmy and Jennifer Yamakawa  
Ron Yamato and Debbie Hochleutner  
Rand Yazzolino  
Carol York  
Jeff and Laura Zimmerman

#### Gifts in Kind

Advantage Marketing  
Amedeo Guitar Duo  
Stephen and Valerie Arelt  
Arthur Murray Dance Studio  
Cat Asper  
Arlene Balin  
Body Fusion Sonoma  
Gerry and Bill Brinton  
Buck Institute for Research on Aging  
Charles Creek  
Dick and Luanne Comfort  
Donna Kelly Make-up  
Coyuchi at Point Reyes Station  
Christine and Paul Crowley  
Crush Beauty Bar  
Curves  
Deerfield Ranch Winery  
Gary Edwards  
The Epicurean Connection  
Allison Evanson, Sonoma Valley Hospital  
Ronald Franklin and Hilda Teran-Franklin  
G3 Women's Conference/Speaker Series  
the girl and the fig  
Gloria Ferrer Caves and Vineyards

Gunlach Bundschu Winery  
Phyllis Gurney  
Nancy and Tony Lilly  
Peter and Maggie Haywood  
Highway 12 Vineyards and Winery  
Janet Humphreys  
Maxwell Nails  
John Meserve  
Napa Valley Plastic Surgery, Inc.  
Richard and Sharon Nevins  
Jeanette Newman  
Osher Life Long Learning Institute-  
Sonoma State University  
Parkpoint Health Club  
Pharmaca  
Pilates ProWorks Sonoma  
Regina Powers  
Pure Barre  
Quarry Hill Botanical Garden  
Ramekins Culinary School, Events and Inn  
Ravenswood Winery  
Tom Rusert  
Edward and Rose Mary Schmidt  
Sandy Smart  
Sonoma Aquatic Club  
Sonoma County Parks and Sonoma County  
Parks Foundation  
Sonoma Ecology Center  
Sonoma Golf Club  
Sonoma Index-Tribune  
Sonoma Market  
Sonoma Media  
Sonoma Naturopathic Medicine  
Sonoma Raceway  
Sonoma Stompers Baseball Club  
Sonoma Valley International Film Festival  
Stone Edge Farms Estate Vineyards & Winery  
Sweet Scoops  
Transcendence Theatre Company  
Wine Country Cyclery  
Yoga Community

*Recognizes gifts/pledges  
received July 1, 2015 to  
August 31, 2016.*



# Contact Information For Hospital Services

Visit our website at [svh.com](http://svh.com) for more information.

## SONOMA VALLEY HOSPITAL

347 Andrieux Street, Sonoma, CA 95476

**General Number** 707.935.5000

Fax 707.935.5027

**Admitting** 707.935.5022

**Preregistration** 707.935.5025

Fax 707.935.5439

## Emergency Department

**Phone** 707.935.5100 • Fax 707.935.5110

## The Birthplace At Sonoma Valley Hospital

Call to arrange a tour or for classes For Expecting Parents and New Moms.

**Phone** 707.935.5301 • Fax 707.935.5305

## Cardiopulmonary Services

**Phone** 707.935.5045 • Fax 707.935.5046

**After Hours** 707.935.5000

Cardiopulmonary Department is open 7:00 am to 3:00 pm, Monday through Friday.

There is a Respiratory Therapist on staff 24 hours a day, 7 days a week. You can reach the Respiratory Therapist during off hours by calling the main hospital telephone number: 707.935.5000.

## Healing At Home – Skilled Home Health Care

**Phone** 707.935.5135 (8:30 am – 5:00 pm)

7 days a week.

**Email:** [healingathome@svh.com](mailto:healingathome@svh.com)

## Hospice Care Room

Contact Hospice By The Bay

**Phone** 707.935.7504

## Laboratory

**Phone** 707.935.5185 • Fax 707.935.5437

**Pre-register by calling** 707.935.5025.

Monday through Friday, 7:00 am to 5:00 pm, and Saturdays 8:00 am until noon. Please be sure to check in with Admitting prior to going to the Lab.

## Medical Imaging (Radiology, X-Ray, CT)

Monday through Friday, 7:30 am to 5:30 pm

**Phone** 707.935.5235 • Fax 707.935.5430

## Medical Records

**Phone** 707.935.5250 • Fax 707.935.5434

**Nurse Navigator for Total Joint Replacement and Elective Surgeries**  
**Phone** 707.935.5378 • Fax 707.935.5026

## Nutrition Counseling

Allison Evanson, MS, RD

**Phone** 707.935.5287 • Fax 707.935.5427

## Occupational Health

**Phone** 707.935.5470 • Fax 707.935.5461

## Patient Accounting

**Phone** 707.935.5325 • Fax 707.935.5319

## Rehabilitation & Physical Therapy

### Hand and Physical Therapy

19312 Sonoma Hwy, Sonoma

Monday to Friday, 7:00 am to 5:00 pm

**Phone** 707.935.5345 • Fax 707.935.5423

**Speech Therapy** is located within Hospital

**Phone** 707.935.5375

## Skilled Nursing Facility

**Phone** 707.935.5063

## Travel Medicine

**Phone** 707.935.5470 • Fax 707.935.5461

## Weight Loss/Bariatric Surgery (Prima)

**Phone** 707.938.3870 • Fax 707.938.3076

## Wound Care Clinic

**Phone** 707.935.5270 • Fax 707.935.5272

Monday – Friday, 8:00 am to 4:30 pm

## Sonoma Valley Hospital Foundation

Dave Pier, Executive Director

**Phone** 707.935.5070 • Fax 707.935.5071

**Email:** [dpier@svh.com](mailto:dpier@svh.com)

347 Andrieux Street, Sonoma, CA 95476  
[svhfoundation.com](http://svhfoundation.com)

## Cancer Support Sonoma

A program of Sonoma Valley Hospital Foundation. For information:

**Phone** 707.935.5244

**Email:** [infocancersupport@svh.com](mailto:infocancersupport@svh.com)

A patient intake form is available on line at [cancersupportsonoma.com](http://cancersupportsonoma.com), or contact us.







SONOMA VALLEY HOSPITAL

*A Tradition Of Service To The Sonoma Valley*



SONOMA VALLEY HOSPITAL  
347 ANDRIEUX STREET • SONOMA, CA 95476  
WWW.SVH.COM • 707-935-5000